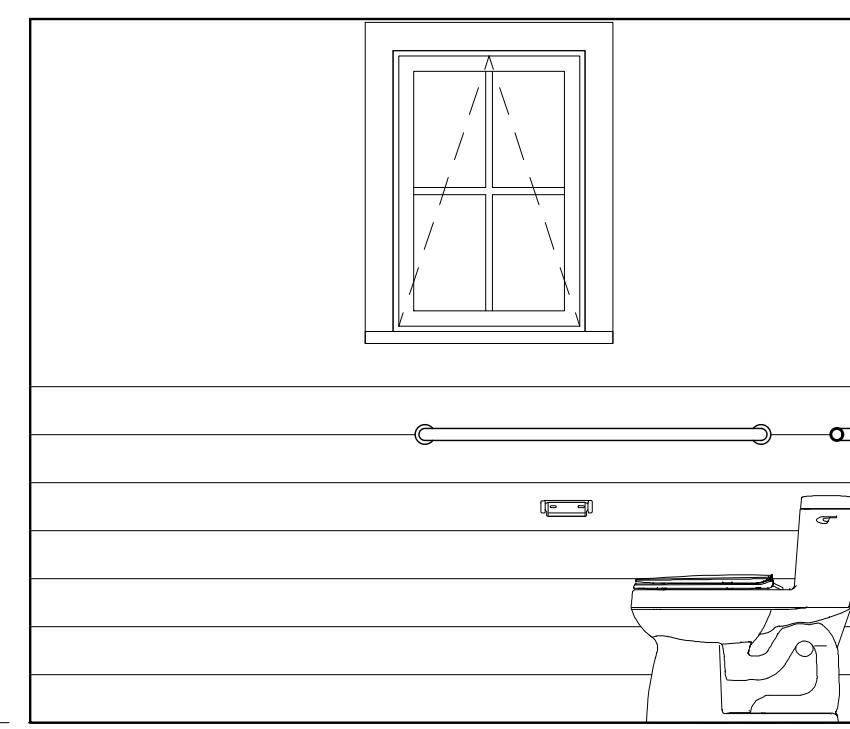
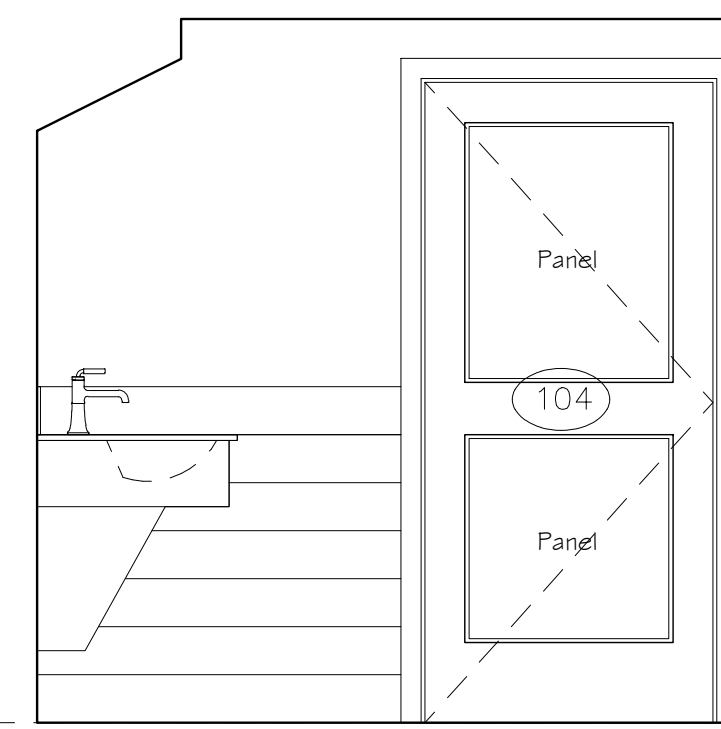


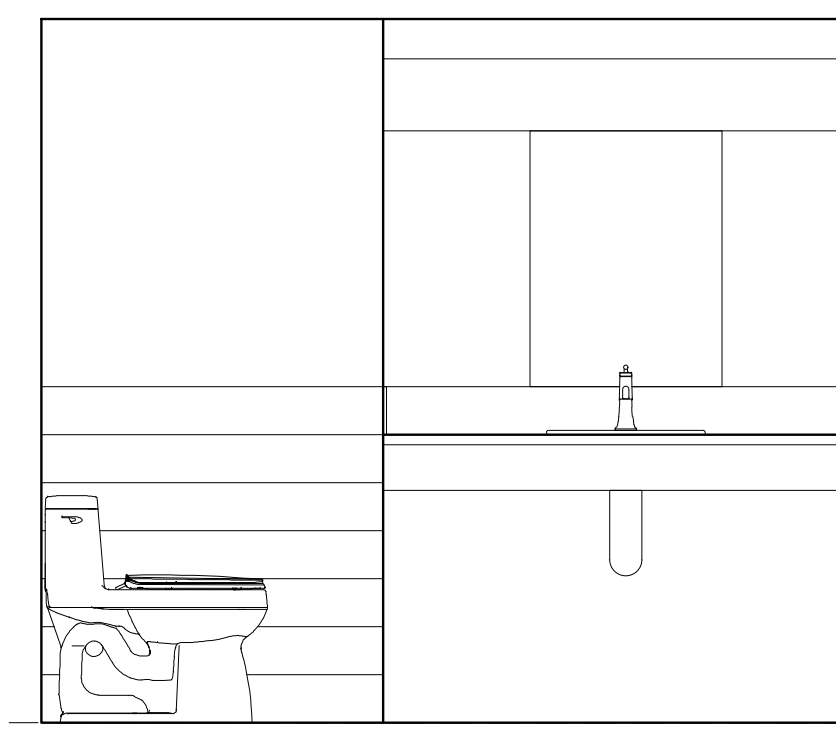
1 ADA Toilet - East
A9.1 1/2" = 1'-0"



2 ADA Toilet - North
A9.1 1/2" = 1'-0"

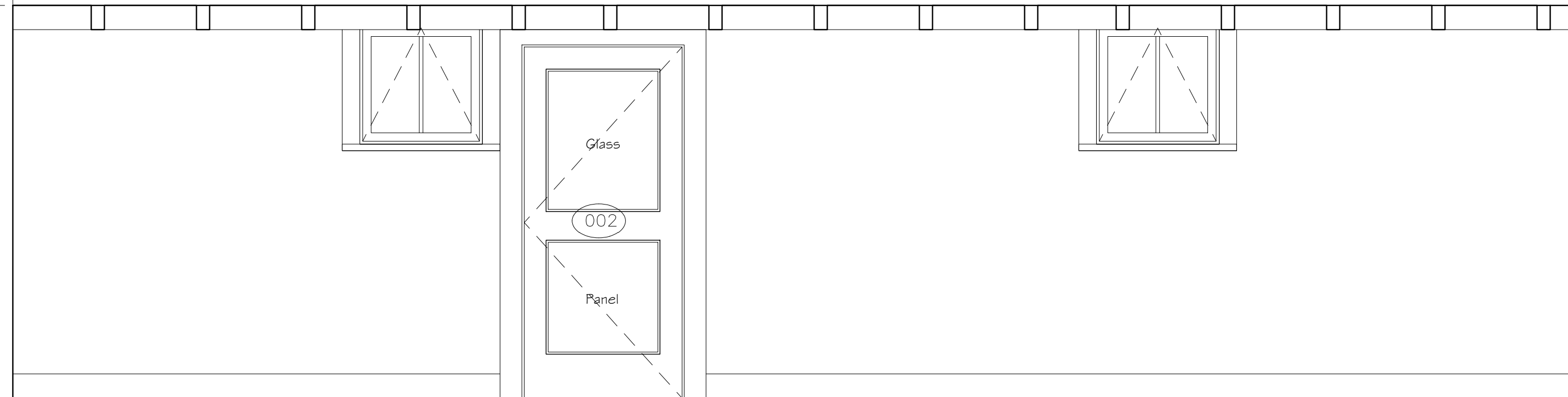


3 ADA Toilet - West
A9.1 1/2" = 1'-0"

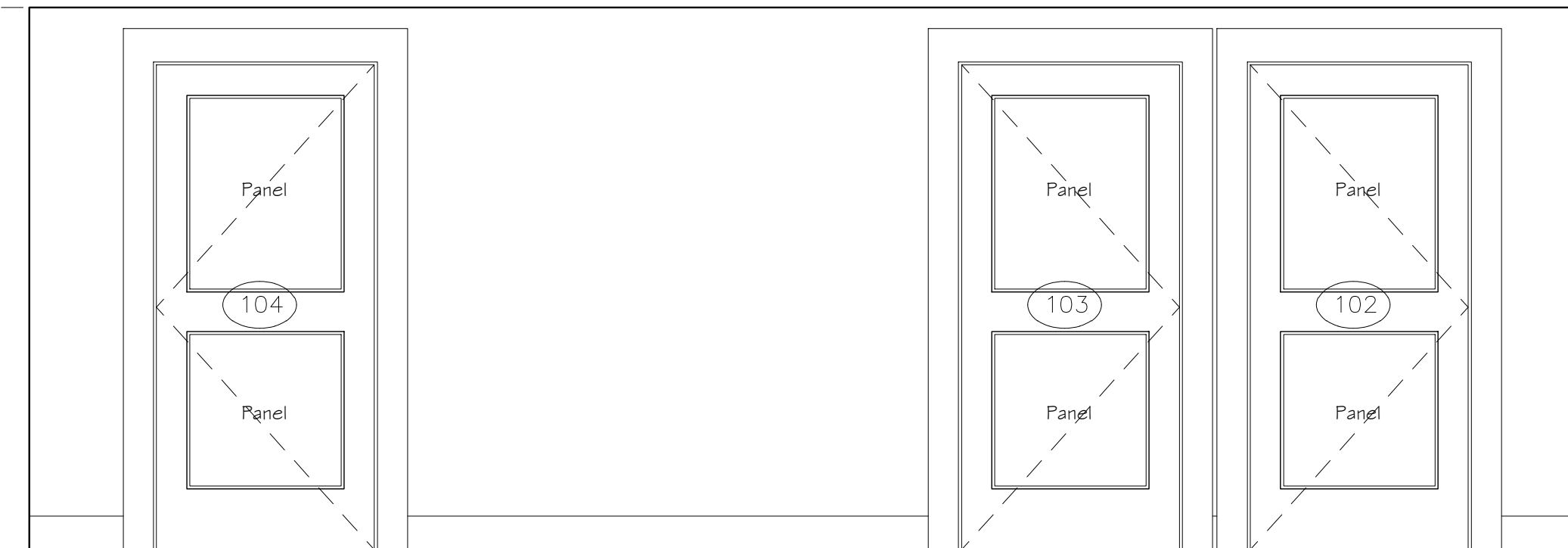


4 ADA Toilet - South
A9.1 1/2" = 1'-0"

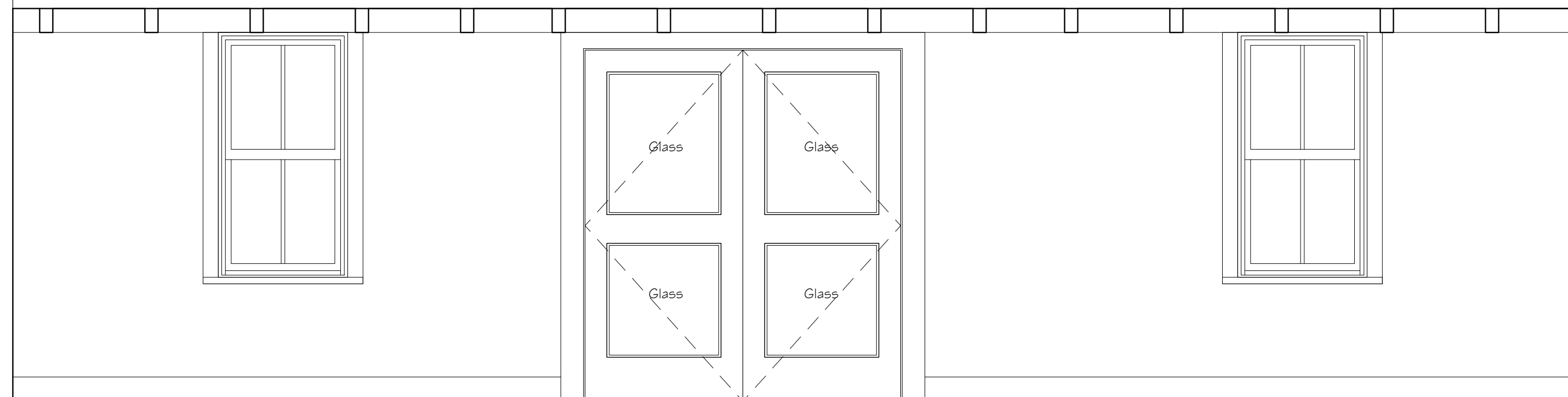
Provide heat shield guard integral with sink



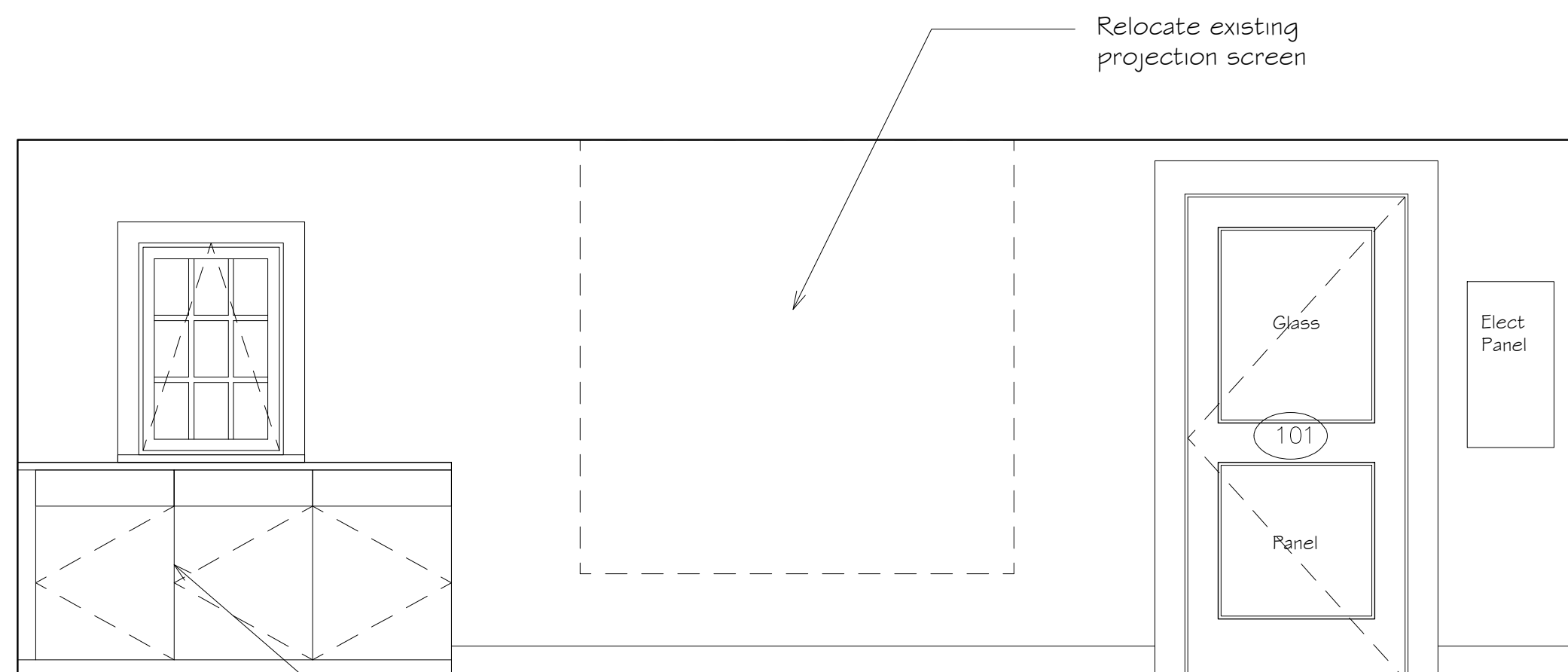
5 Gathering Space - North
A9.1 1/2" = 1'-0"



6 Gathering Space - East
A9.1 1/4" = 1'-0"

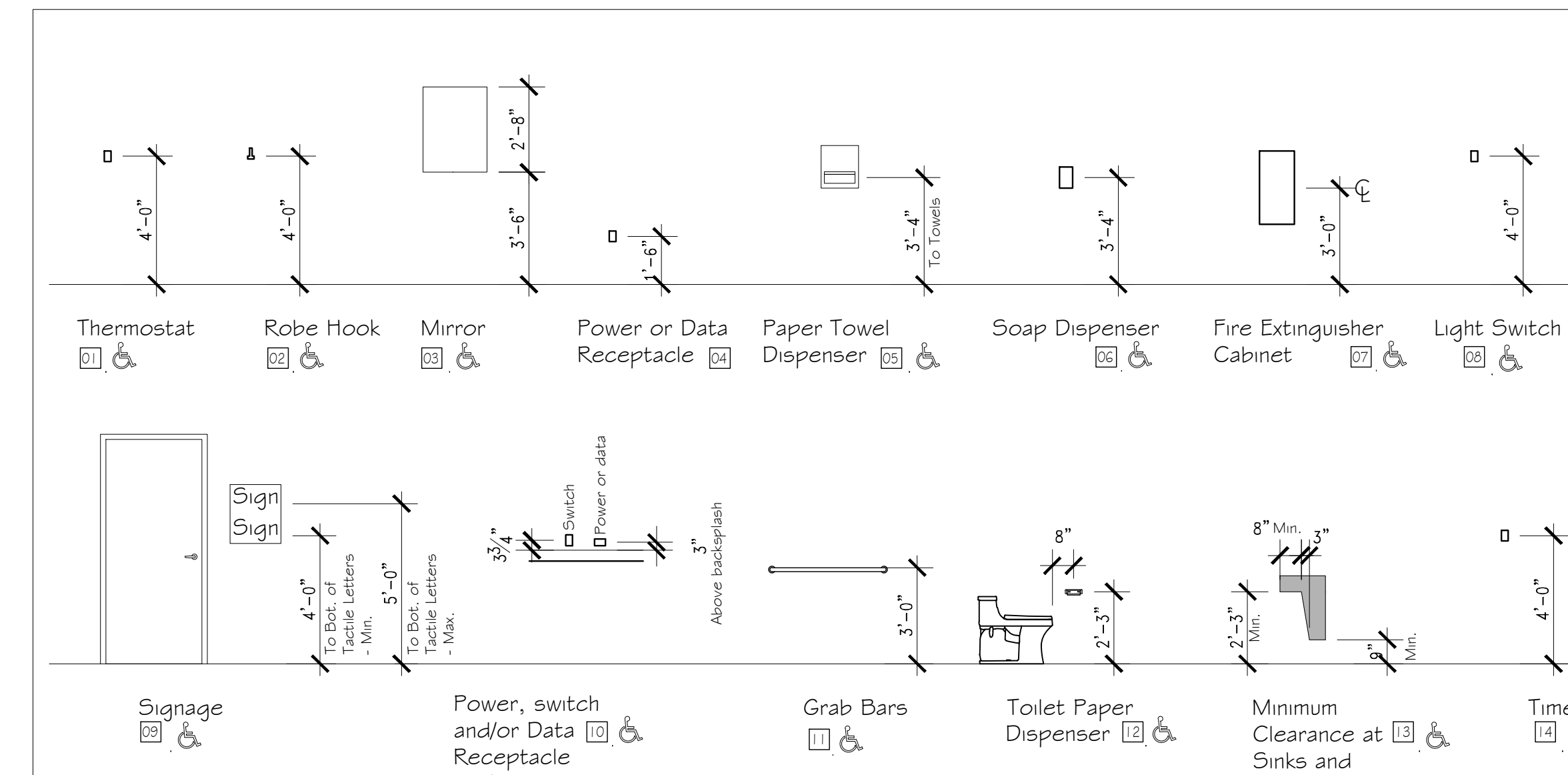


7 Gathering Space - South
A9.1 1/4" = 1'-0"



8 Gathering Space - West
A9.1 1/2" = 1'-0"

See A9.2 for cabinets



General Notes:
1. All mounting locations and configurations shown here apply to all occurrences of these items in the project unless specifically noted otherwise.
2. Any Discrepancies, conflicts, and inconsistencies between information shown here and information shown elsewhere in the documents must be brought to the architect's attention prior to roughing-in and installation.

9 Typical Mounting Dimensions
A9.1 1/4" = 1'-0"

Plumbing Fixture & Specialty Schedule						
Location	Manufacturer	Size	Model	Model No.	Color	Comments
ITEMS						
Toilet	American Standard	16 1/2" height	Cadet 1.6 GPF	2467.016 Bowl, 4142.800 Tank, right trip lever	White	
Seat	Church	Elongated		7850TJDG	White	
Sink	American Standard	10x16x5 5/8	Aqualyn	0475.047	White	1 1/4" trap
Faucet	Moen	Single hole	Commercial brass single handle	84136	Polished chrome	Aerator 0.5 GPM
Grab Bars	Bobrick	36" & 42"		B5806.99	SS	
Toilet paper holder	Bobrick			B9543	Satin SS	
Paper towel dispenser	Bobrick			B4262	SS	
Soap dispenser	Bobrick			B4112	SS	
Robe hook	Kohler		Alteo	K-37055	BN	
Mirror	Bobrick	24"x36"	B165 Series	B1652436	SS	

Interior Elevations and Schedules

SCALE:
1/2" = 1'-0"

12-6-23

DRAWN BY CHECKED BY

PROJECT NUMBER

DRAWING NUMBER

A9.1